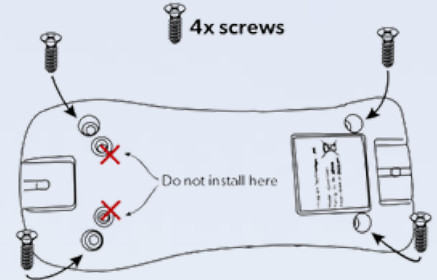




1. Install Batteries

- Remove the tape from the Bin-Sense Direct device.
- Remove the top cover.
- Install two AA batteries (included).
- Place the top cover back on the device.
- Secure the cover in place with the four included screws as shown.



2. Get the Mobile app

Download the Bin-Sense Mobile App from the App Store (iOS) or Google Play Store (Android).



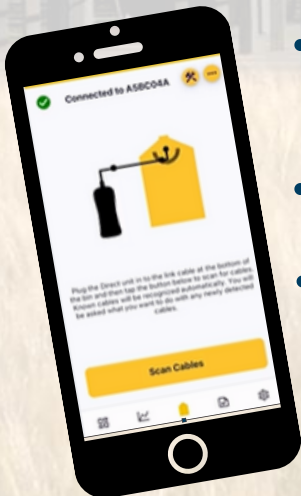
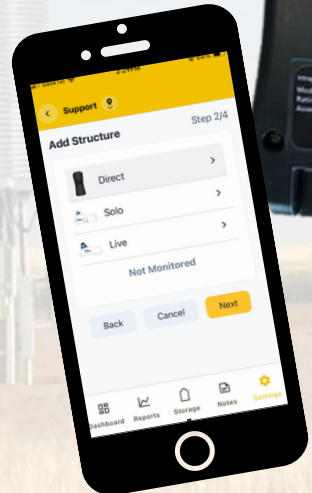
3. Connect your Bin-Sense Direct from the Mobile App

- Enable Bluetooth and location services for the Bin-Sense Mobile App.
- Open the app and login or *Register New User*.
- Follow the on-screen prompts to set up your account and create a site.
- Choose the *Direct - Scan Cables* option near the top of the screen.
- Select your Bin-Sense device's serial number from the list (located on the sticker on the back of the device) from the list.
- You're now ready to scan cables.



4. Scan cables and create bins

- At the bin, plug the sensing cable connector into your Bin-Sense Direct device.
- Tap the *Scan Cables* button in the app. Choose the *Add Cables* option to add the sensing cable(s) to a bin. You only need to do this the first time you scan a cable.
- Follow the prompts to select the site and bin where you want to add the sensing cable(s)



- You can create a new structure (or site) if you have not already done so by choosing *Add Structure*. Follow the prompts to add the structure (or site).
- If you want to add other bins to the app, select *Add Structure*.
- Your data is automatically synced to the Bin-Sense servers when you are connected to the internet. You can sync your data manually by swiping down at the top of the bin list.



5. Choose a bin from the list for more details

- Tap on a structure to bring up a bin summary.
- You can set the grain type and volume, as well as other general settings for the bin.
- From there you can navigate between *Grid View*, *Table View* and *Map View*.

6. View the heatmap and graph past readings

- In *Grid View*, tap on a bin to view the heat map for a particular bin.
- The heat map gives a visual indicator of your grain conditions.
- View past bin readings.
- Set the grain level by tapping on a sensor and setting it as covered or exposed.
- Tapping on sensors also gives the option to graph past sensor readings

